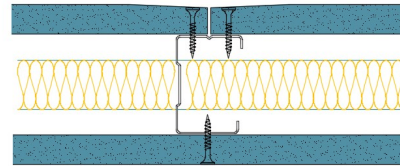


50-S-54(25) - SPEEDLINE System Data Sheet - Version V1 (24-10-23)

SPEEDLINE 50mm 'C' Stud Partition @600mm Ctrs,
with Siniat GTEC 15mm dB Board each side,
25mm APR



System Performance Breakdown

Fire Resistance:

BS476 Part 22:1987:

Test Ref & Date or Applied Ref & Report:

Max Height:

Thickness:

Duty Grade: BS 5234: Part 2:1992:

Sound Insulation:

30/30 Minutes (Integrity/Insulation).

BRE 269826 - BRE Report P102396-1011C

Refer to Speedline Specification Clause

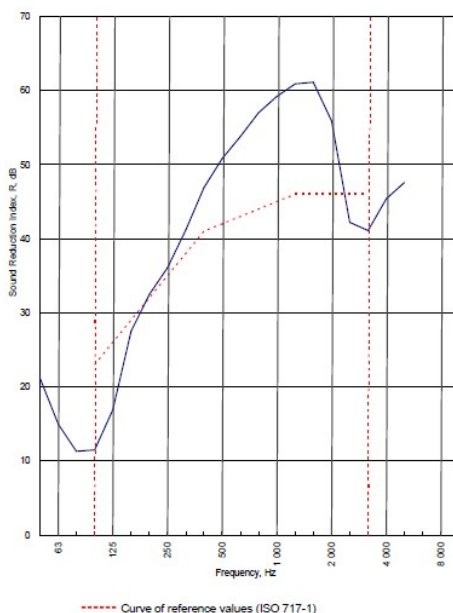
82 mm. (At Base Track, Excluding Finishes)

Heavy - Annexes A-F

42 R_wdB, Date Tested or Assessed Against - 50-S-53(25)





Test Code:
H17502AA
Test Date:
27/07/2011

Freq. Hz	R dB
50	21.2
63	15.0
80	11.3
100	11.5
125	16.9
160	27.5
200	32.5
250	36.1
315	41.2
400	46.9
500	50.8
630	53.8
800	57.0
1 000	59.2
1 250	60.9
1 600	61.1
2 000	55.9
2 500	42.2
3 150	41.1
4 000	45.4
5 000	47.6
6 300	
8 000	
10 000	



Rating according to BS EN ISO 717-1:1997 **R_w (C;Ctr) = 42 (-5;-12) dB**
 Max dev. 11.5 dB at 100 Hz
 Evaluation based on laboratory measurement results obtained by an engineering method:
 C₅₀₋₃₁₅₀ = -5 dB C₅₀₋₂₀₀₀ = -5 dB C₁₀₀₋₅₀₀₀ = -4 dB
 C₁₅₀₋₃₁₅₀ = -14 dB C₁₅₀₋₅₀₀₀ = -14 dB C_{2,100-5000} = -12 dB

TESTED AT ONE OF THE UKAS ACCREDITED LABORATORIES BELOW

- B.T.C (H-Ref on Graph) 
- B.R.E 
- AIRO 
- S.R.L 

Customer: Metsec plc Hepsec Division

BTC 17502A: Page 9 of 11

